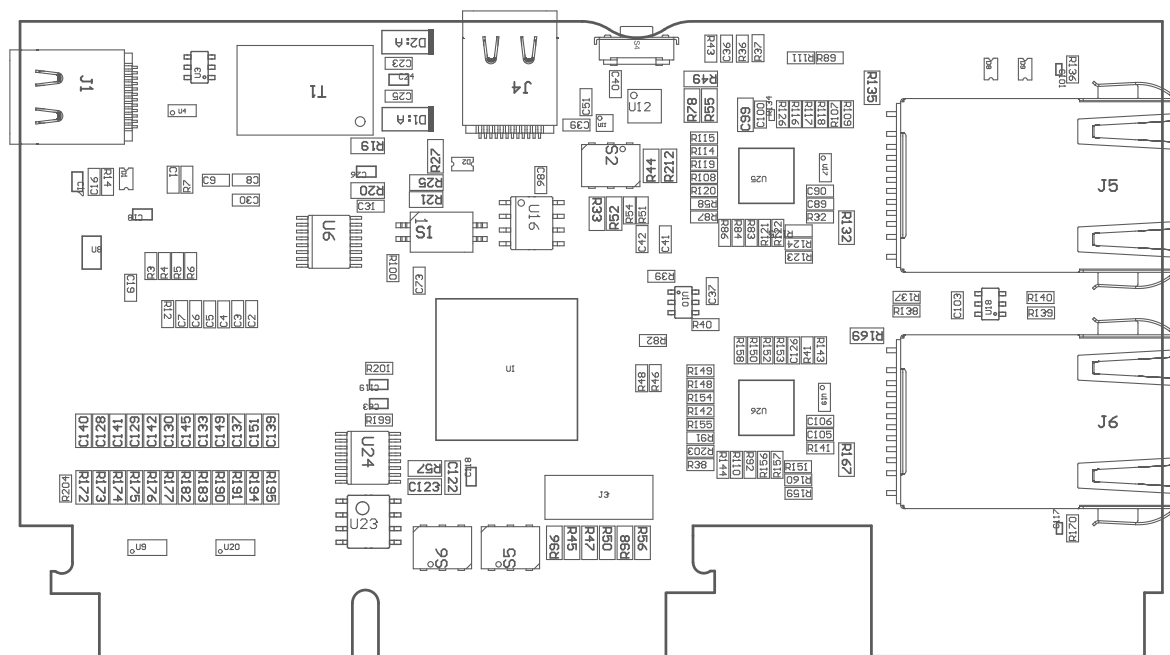
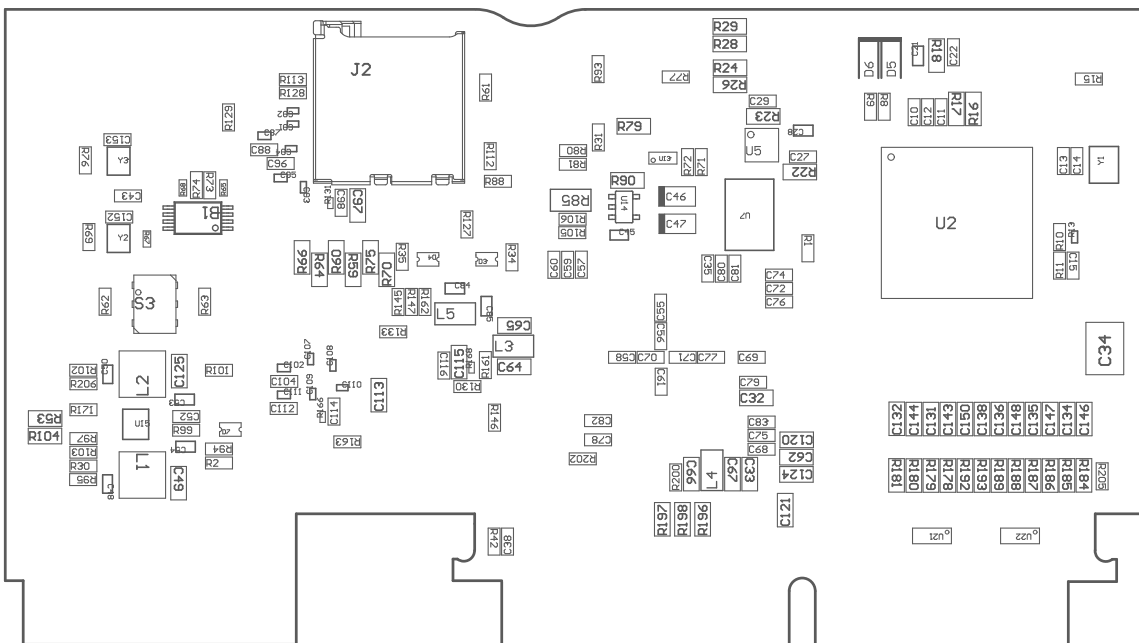


ZZ4 ■ These assemblies must comply with workmanship standards IPC-A-610 Class 2, unless otherwise specified.



ASSEMBLY VARIANT: [No Variations]

PCB VIEWED FROM TOP SIDE	BOARD #: MCU114	REV: A	SUN REV:
	TID #: N/A		
PLOT NAME = Top Assembly Drawing	GENERATED : 6/13/2023 6:39:52 PM		TEXAS INSTRUMENTS



COMPONENTS MARKED 'DNP' SHOULD NOT BE POPULATED.  
 ASSEMBLY VARIANT: [No Variations]

	BOARD #: MCU114	REV: A	SUN REV:
	TID #: N/A		
PLOT NAME = Bottom Assembly Drawing	GENERATED : 6/13/2023 6:39:52 PM	TEXAS INSTRUMENTS	